

## 115-24-200

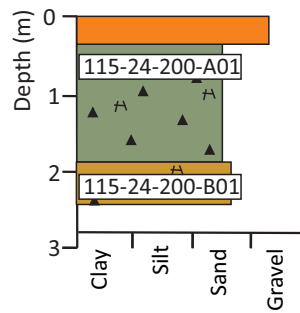
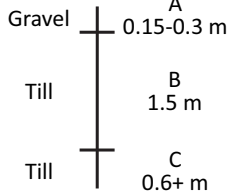
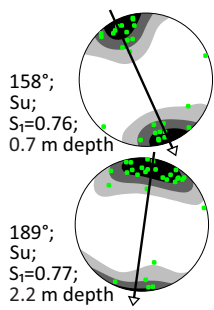
Quarry, sub-vertical wall  
Elevation: 261 m (surface)

Easting: 655819 Northing: 5478160 (NAD84, Zone 14)

### Ice-flow data

### Interpretation

### Bed

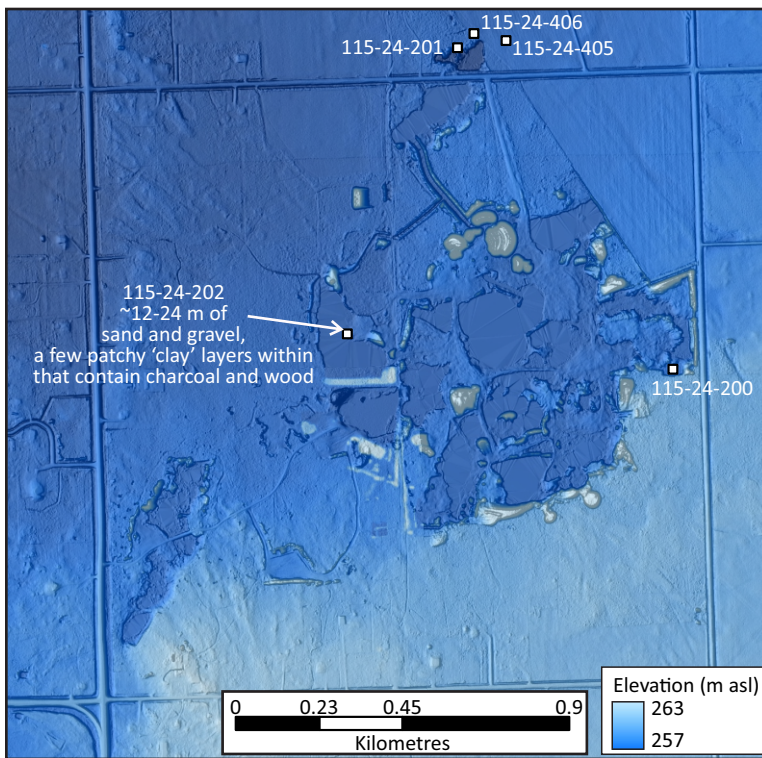


### Description

A: sandy gravel to gravelly sand; moderately sorted with 30–50% clasts that are 90% calcareous and granule to medium-cobble sized; sharp lower contact.

B: diamict; massive, matrix supported, grey brown (2.5Y 5/2), silty sand to sandy silt matrix with 5% clasts (granule to large cobble-sized, subangular to rounded), very overconsolidated, blocky and friable structure with oxidation staining on joints; sharp nondistinct lower contact.

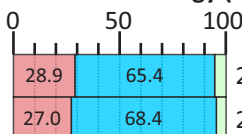
C: diamict; massive, matrix supported, light olive brown (2.5Y 5/3), clayey sandy silt matrix with 5–10% clasts (granule to medium cobble-sized, subangular to rounded), very overconsolidated, blocky and friable structure with heavy oxidation staining on joints.



### Simplified clast lithology (2–8 mm ct. %)

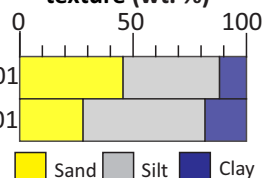
### Till-matrix total carbonate (wt. %)

### Till-matrix texture (wt. %)



36.1%  
33.8%

200-A01  
200-B01



Granitoid Calcareous Greenstone/Greywacke

Sand Silt Clay